

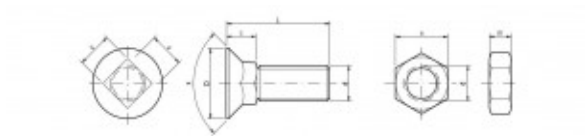
DIN 608 (8.8)

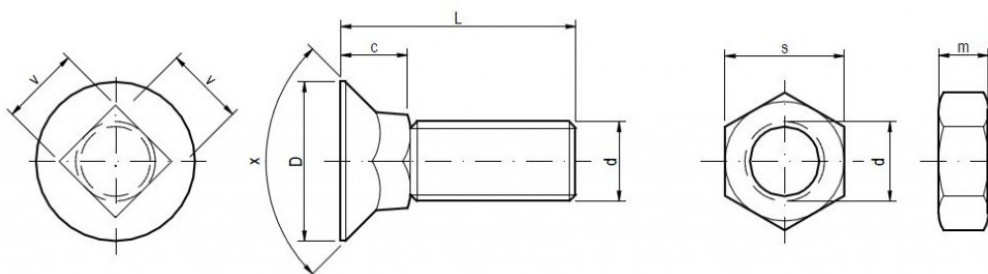
Plough bolts with square neck, with nuts DIN 934 (8.8)

THE MOST PARTICULAR USE

The bolts to machinery of LEMKEN

The most often used OEM code is Lemken 3015785 12 x 35.





Specifications

d	c	D	x	v	s	m
M 10	8,00	19,00	90°	10,00	17,00	8,00
M 12	10,50	24,00	90°	12,00	19,00	10,00
M 14	11,00	28,00	90°	14,00	22,00	11,00

The bolts DIN 608 do fit to machinery of OEM LEMKEN, ÖVERUM, PÖTTINGER, LANDSBERG, KVERNELAND, NIEMEYER, RABE, OVLAC, KÖCKERLING, FARMET, BEDNAR, ROSS, PHX, UNIA GRUDZIADZ, OPALL AGRI and many others.

Packaging

Packed in boxes / pcs		Packaging without nuts	Packaging without nuts
10 x 25	DIN 608 (8.8) zinc plated	200	150/150
10 x 30	DIN 608 (8.8) zinc plated	150	100/100
10 x 35	DIN 608 (8.8) zinc plated	150	100/100
10 x 40	DIN 608 (8.8) zinc plated	100	100/100
10 x 45	DIN 608 (8.8) zinc plated	100	50/50
10 x 50	DIN 608 (8.8) zinc plated	100	50/50
10 x 55	DIN 608 (8.8) zinc plated	100	50/50
10 x 60	DIN 608 (8.8) zinc plated	150	100/100
10 x 65	DIN 608 (8.8) zinc plated	150	100/100
10 x 70	DIN 608 (8.8) zinc plated	150	100/100

10 x 75	DIN 608 (8.8) zinc plated	100	100/100
10 x 80	DIN 608 (8.8) zinc plated	100	50/50
10 x 90	DIN 608 (8.8) zinc plated	80	50/50
10 x 100	DIN 608 (8.8) zinc plated	80	50/50
12 x 30	DIN 608 (8.8) zinc plated	100	50/50
12 x 35	DIN 608 (8.8) zinc plated	100	50/50
12 x 40	DIN 608 (8.8) zinc plated	150	100/100
12 x 45	DIN 608 (8.8) zinc plated	150	100/100
12 x 50	DIN 608 (8.8) zinc plated	100	100/100
12 x 55	DIN 608 (8.8) zinc plated	100	50/50
12 x 60	DIN 608 (8.8) zinc plated	100	50/50
12 x 65	DIN 608 (8.8) zinc plated	90	50/50
12 x 70	DIN 608 (8.8) zinc plated	80	50/50
12 x 75	DIN 608 (8.8) zinc plated	80	50/50
12 x 80	DIN 608 (8.8) zinc plated	60	50/50
12 x 85	DIN 608 (8.8) zinc plated	60	50/50
12 x 90	DIN 608 (8.8) zinc plated	50	50/50
12 x 100	DIN 608 (8.8) zinc plated	50	50/50
14 x 30	DIN 608 (8.8) zinc plated	50	50/50
14 x 35	DIN 608 (8.8) zinc plated	50	50/50
14 x 40	DIN 608 (8.8) zinc plated	50	50/50
14 x 45	DIN 608 (8.8) zinc plated	50	50/50
14 x 50	DIN 608 (8.8) zinc plated	50	50/50
14 x 55	DIN 608 (8.8) zinc plated	50	50/50
14 x 60	DIN 608 (8.8) zinc plated	50	50/50
14 x 65	DIN 608 (8.8) zinc plated	50	50/50
14 x 70	DIN 608 (8.8) zinc plated	50	50/50
14 x 75	DIN 608 (8.8) zinc plated	50	50/50
14 x 80	DIN 608 (8.8) zinc plated	50	50/50