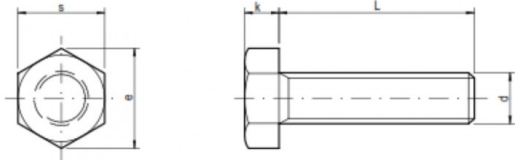
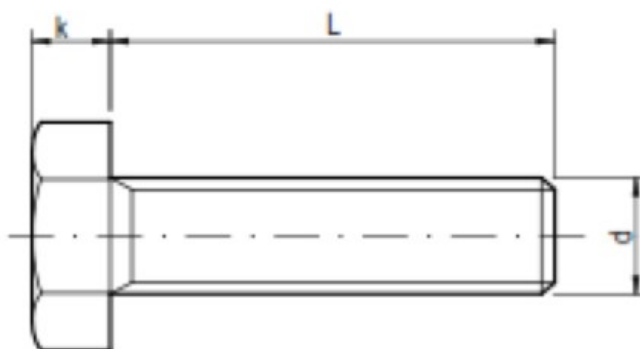
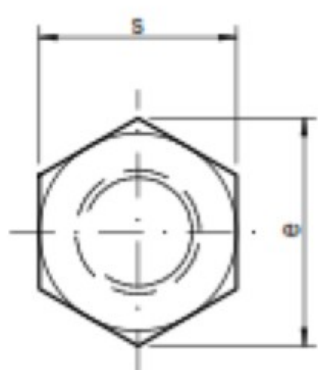


## **ISO 4017 ( 5.8 )**

**The bolts with hexagon head with full thread**





## Specifications

d	k	s	e
M 10	6,40	16,00	17,77
M 12	7,50	18,00	20,03

## Packaging

Packed in boxes/pcs		Packaging/pcs
10 x 16	ISO 4017 (5.8)	200
10 x 22	ISO 4017 (5.8)	200
10 x 20	ISO 4017 (5.8)	200
10 x 25	ISO 4017 (5.8)	150
10 x 30	ISO 4017 (5.8)	150
10 x 35	ISO 4017 (5.8)	100
10 x 40	ISO 4017 (5.8)	100
10 x 45	ISO 4017 (5.8)	100
10 x 50	ISO 4017 (5.8)	100
10 x 55	ISO 4017 (5.8)	150
10 x 60	ISO 4017 (5.8)	150
10 x 65	ISO 4017 (5.8)	150

10 x 70	ISO 4017 (5.8)	100
10 x 75	ISO 4017 (5.8)	100
10 x 80	ISO 4017 (5.8)	100
10 x 90	ISO 4017 (5.8)	80
10 x 100	ISO 4017 (5.8)	80
12 x 16	ISO 4017 (5.8)	300
12 x 18	ISO 4017 (5.8)	250
12 x 20	ISO 4017 (5.8)	250
12 x 22	ISO 4017 (5.8)	250
12 x 25	ISO 4017 (5.8)	250
12 x 30	ISO 4017 (5.8)	200
12 x 35	ISO 4017 (5.8)	150
12 x 40	ISO 4017 (5.8)	150
12 x 45	ISO 4017 (5.8)	150
12 x 50	ISO 4017 (5.8)	100
12 x 55	ISO 4017 (5.8)	100
12 x 60	ISO 4017 (5.8)	100
12 x 65	ISO 4017 (5.8)	100
12 x 70	ISO 4017 (5.8)	80
12 x 75	ISO 4017 (5.8)	80
12 x 80	ISO 4017 (5.8)	80
12 x 90	ISO 4017 (5.8)	60
12 x 100	ISO 4017 (5.8)	50